

Since 1971

HAYMAN

QUALITY BUILT SAFES

Over 40 Years Strong...

Nothing but Cold Hard STEEL goes into every

CASHVAULT

by Hayman Safe Co.

Transitioning in 2019
to All Black Powder Coat Finish



The “CASHVAULT” by Hayman continues the tradition started over 40 years ago to build the best in “B” rated burglar resistive security containers.

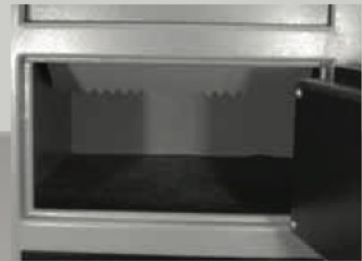
- Our steel bodies are formed from solid steel and are reinforced in and around the door frame for strength and security. Four holes are provided in the bottom for securely anchoring to the floor.
- The doors are 1/2” solid steel and backed up with specially hardened drill resistive plate.
- All doors have a spring loaded re-locking system to dead lock the bolt work in the event of a forcible entry attempt.
- We have added saw tooth baffles to prevent fishing in the front loader and enlarged the rotary hopper for ease of use in the top loader.



Extra Heavy Duty Hinge



Large Chrome Plated Bolts



Baffling Protecting Deposits

- We have added a detent system that will automatically extend the bolts whenever the door is closed.
- Our finish is a gray and black powder coating that is more durable and environmentally safer than the wet spray finish others use.
- Only U.L. Approved locks are used, assuring reliability in daily commercial operation.

Keeping your cash deposits safe and away from outsiders as well as unauthorized employees is at the heart of each of these units.

CASH VAULT

by Hayman Safe Co.



CV 14 E



CV 20 C



CV 27 C

CASH VAULTS are available with Key, Combination or Electronic Locks (K, C, E) as indicated in the part numbers.

| Model | Outside Dim HxWxD | Inside Dim HxWxD | Weight in lbs | CIC/CFC | Shelves |
|--------------|--|--|---------------|------------|---------|
| CV 14 (C,E) | 14 x 14 x 14 | 13 ⁵ / ₈ x 13 ³ / ₈ x 11 | 69 lbs | 2042 / 1.2 | 1 |
| CV 20 (C,E) | 20 x 15 x 15 | 19 ⁵ / ₈ x 14 ⁵ / ₈ x 12 | 79 lbs | 3444 / 2.0 | 1 |
| CV 20D (C,E) | 20 ¹ / ₂ x 20 ¹ / ₂ x 22 | 20 ¹ / ₈ x 20 ¹ / ₈ x 19 | 140 lbs | 7600 / 4.4 | 1 |
| CV 27 (C,E) | 27 x 19 x 17 | 26 ⁵ / ₈ x 18 ⁵ / ₈ x 14 | 165 lbs | 6942 / 4.0 | 1 |

Front & Top Load Depositories

E Locks are Optional • C Locks are Standard



CV F20C



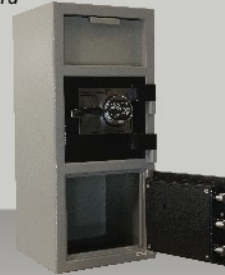
CV H20E



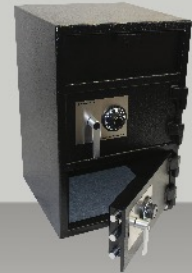
CV F27C



CV F30WC



CV F32-2EC



CV F30W-2CC

| Model | Outside Dim HxWxD | Inside Dim HxWxD | Weight in lbs | CIC/CFC | Depository Opening HxWxD |
|---|-------------------|--|---------------|------------|---|
| CV F20 (K,C,E) | 20 x 14 x 14 | 8 ¹ / ₄ x 13 ³ / ₈ x 11 | 90 lbs | 1836 / 1.0 | 5 x 10 ¹ / ₂ x 10 ³ / ₄ |
| CV H20 (C,E) | 20 x 14 x 14 | 12 ³ / ₄ x 13 ³ / ₈ x 11 | 93 lbs | 1911 / 1.1 | 6 ¹ / ₄ x 4 ¹ / ₂ x 9 |
| CV F27 (C,E) | 27 x 14 x 14 | 15 ¹ / ₂ x 13 ³ / ₈ x 11 | 119 lbs | 2323 / 1.3 | 5 x 10 ¹ / ₂ x 10 ³ / ₄ |
| CV F30W (C,E) | 30 x 20 x 20 | 18 x 19 ⁵ / ₈ x 17 | 185 lbs | 6005 / 3.5 | 4 ¹ / ₄ x 15 ³ / ₄ x 11 ¹ / ₄ |
| CV F30W ILK (C,E) W/ Inner Locker with Key | 30 x 20 x 20 | 4 ¹ / ₂ x 19 ¹ / ₂ x 14 ¹ / ₂ (locker) 9 ³ / ₄ x 16 ³ / ₈ x 17 ¹ / ₂ (bottom) | 211 lbs | 6005 / 3.5 | 4 ¹ / ₂ x 15 ³ / ₄ x 11 ¹ / ₄ |
| CV F32-2 (C,E/C,E) | 32 x 14 x 14 | 8 ¹ / ₄ x 13 ³ / ₈ x 11 (top) 12 x 13 ³ / ₈ x 11 (bottom) | 150 lbs | 2998 / 1.7 | 5 x 10 ¹ / ₂ x 10 ³ / ₄ |
| CV F30W-2 (K,C,E/C,E) | 30 x 20 x 20 | 7 x 19 ⁵ / ₈ x 17 (top) 11 x 19 ⁵ / ₈ x 17 (bottom) | 194 lbs | 6005 / 3.5 | 4 ¹ / ₄ x 15 ³ / ₄ x 11 ¹ / ₄ |

Budget Crunching Drop Safes with 2 Key Locks



CV SL8K



CV SL12K



CV H13K



CV H19-2KK

No frills, just strength and security. Full "B" rate body with 1/2" solid steel door AND re-lockers.

| Model | Outside Dim HxWxD | Inside Dim HxWxD | Weight in lbs | CIC/CFC | Depository Opening HxWxD |
|---------------------|---|---|---------------|-----------|---|
| CV SL8K | 8 x 6 x 12 | 7 x 5 ⁵ / ₈ x 10 ¹ / ₂ | 20 lbs | 413 / .24 | 5 ⁵ / ₈ x 5 ³ / ₄ x 3 ¹ / ₂ |
| CV SL12K | 12 x 6 x 8 | 11 x 5 ⁵ / ₈ x 6 ¹ / ₂ | 23 lbs | 402 / .23 | 5 ⁵ / ₈ x 5 ³ / ₄ x 3 ¹ / ₂ |
| CV H13K | 13 x 8 ¹ / ₄ x 11 ³ / ₄ | 5 ³ / ₄ x 8 ¹ / ₄ x 9 ¹ / ₄ | 44 lbs | 432 / .25 | 6 ¹ / ₄ x 4 ¹ / ₂ x 7 ⁵ / ₈ |
| CV H19-2 (CC or KK) | 19 x 8 ¹ / ₄ x 12 | 5 ³ / ₄ x 8 ¹ / ₄ x 9 ¹ / ₄ (top) 5 ³ / ₄ x 8 ¹ / ₄ x 9 ¹ / ₄ (bottom) | 68 lbs | 864 / .5 | 6 ¹ / ₄ x 4 ¹ / ₂ x 7 ⁵ / ₈ |